

# BIT - INNOVATION AND STARTUP

**THE LATEST NEWS, VIEWS & ANNOUNCEMENTS - OCTOBER 2021**

**BIT - STARTUP QUARTERLY NEWS BULLETIN**

**PRIVATE CIRCULATION ONLY**

**ISSUE - 02**





## BANNARI AMMAN INSTITUTE OF TECHNOLOGY

An Autonomous Institution Affiliated to Anna University - Chennai • Approved by AICTE • Accredited by NAAC with "A" Grade  
**SATHYAMANGALAM - 638401 ERODE DISTRICT TAMILNADU INDIA**  
 Ph : 04295-226000/221289 Fax : 04295-226666 E-mail : stayahead@bitsathy.ac.in Web : www.bitsathy.ac.in



### TABLE OF CONTENT

S. No	FIRM NAME	Pg. No.
1	A-Square Machinery Equipments	01
2	BitBot	05
3	ELECTEK	07
4	EMBETRONICZ	09
5	FAB Solutions	11
6	First Choice AC Solutions	13
7	i Foods	16
8	IoT Techno Solutions	19
9	i-Print	23
10	Sky View	25
11	Smilo Bio	27
12	Technology for wild life solutions	29
13	Trace Robotics	31
14	Heart2art	33





# A-SQUARE MACHINERY EQUIPMENTS PVT LTD

*A-SQUARE*



## FACULTY MEMBERS:

Dr. V C UVARAJA

Dr. A ANANDHAMOORTHY

Mr. S DEEPANKUMAR

Mr. N NATARAJAN

## OBJECTIVE OF THE FIRM

- Build up development delivery ability, with predictable and lower costs.
- Build additional product features in a cost effective, yet a future proof and high quality manner.
- Improve quality and efficiency
- Drive the effort to provide a system high availability, redundancy, failure handling and monitoring.
- Implement modern software development methodology, towards goal of the self organizing team, and delivery commitments.
- To maintain the high quality standards

### IN THIS ISSUE

NUMBER OF PRODUCTS  
COMPLETED - 3

NUMBER OF ONGOING  
PRODUCTS - 4

NUMBER OF PRODUCTS  
SOLD - 1

### CONTACT DETAILS

Mail\_ID: uvarajvc@bitsathy.ac.in  
Ph. No. : +919894459784

## WRENCH FOR SCISSOR JACK

Scissor jacks are devices that are used to slowly and carefully lift vehicles off of the ground. They are called scissor jacks because they are made of diagonal pieces of metal that contract and expand in a way similar to that of a pair of scissors. Scissor jacks are exceptionally useful, but they can be inconvenient, if not downright dangerous when used beyond what they are designed to do. Handling the jack is difficult. To overcome this issue the torque wrench has been modified and used for operating the screw. This wrench will be useful to operate the jack for lifting and lowering the jack safely. The manual effort will be reduced considerably.



## AGRO TRASH GRABBER

The handle of this reacher is covered with rubber padding that gently adheres to the shape of your hand for comfortable, pain-free use. The grabber jaw is coated with premium rubber to provide maximum grip strength, allowing you to lift items of all shapes and sizes with ease. This reacher grabber by Vive is a handy, quality-crafted tool designed to provide additional reach for anyone affected by limited mobility. Its maximum pick up weight is up to 15 Kg. Its mild steel frame is thin enough to rescue items trapped behind furniture while gripping rubber pincers ensure that you are successful with each use. This grabber is perfect for picking up trash, retrieving loose change, grabbing out of reach items stuck in high places, and accessing hard to reach areas





## DOUBLE WHEEL HOE

The Double wheel hoe is light enough for a girl or woman to handle, yet strong and sturdy enough for any job. Amateur gardeners like it because it saves them so much time and makes their gardening so easy. Professionals like it because it does the most precise work, and will stand constant use through many sessions. The Double wheel hoe includes the most frequently used attachments are hoes, cultivator teeth, and plow, which are all oil-tempered, and hardened in an electric furnace to make them work better and wear longer. The hoes are used for weeding, mulching, and shallow cultivation. They are specially designed with a high shield to permit close work without danger to the crop. The cultivator teeth or "duckfeet" are for general cultivation

## ACTION PLAN FOR THE UPCOMING MONTHS

To design and fabricate a broomstick making machine, Concept has been generated and discussed with students for fabricating the prototype model. Need to purchase the raw materials for it and we are planning to complete it in a month.



# BIT BOT

*Building future bots*

## FACULTY MEMBERS:

Mr. K NANDAKUMAR

Ms. K RENUKA

Mr. BHUVANESH



## OBJECTIVE OF THE FIRM

To increase the profit by increasing the reach of the firm to larger customers by promoting and developing affordable and effective solutions and creating a sustainable ecosystem.

### IN THIS ISSUE

NUMBER OF PRODUCTS  
COMPLETED - 1

NUMBER OF ONGOING  
PRODUCTS - 2

### CONTACT DETAILS

Mail\_ID: nandakumar@bitsathy.ac.in  
Ph. No. : +919600799158

## CUSTOMER ALERTING SYSTEM

Whatever the size of your shop, gallery, or store, someone has to be ready to greet customers who walk in. CAS tells you the moment someone comes in the door. You can be in a stockroom, office, or next door for coffee. You'll get an alert as soon as the door is opened or someone crosses the threshold. Since you will know as soon as someone enters the premises, CAS can reduce shrinkage too. CAS is reliable and easy to use. CAS could discriminate between the person entering the shop from the person leaving the shop. So it could be made to alert only if a person enters or leaves or both



## ACTION PLAN FOR THE UPCOMING MONTHS

To Develop a device which detects entry of customers and alert the shop owner

To Develop a toy robot which can perform tasks like walking, dancing with led display to make sign outputs. Planned to complete the product in 3 months.

# ELECTEK

*Driving to the future*

**FACULTY MEMBERS:**

Dr. S VEERAKUMAR

Mr. S SATHISHKUMAR

## OBJECTIVE OF THE FIRM

- Our main objective is to develop the future technology in E-Mobility and to develop all accessories required for E-Mobility in our premises.
- To empower technical skills to students in Electrical and Electronics engineering.

### IN THIS ISSUE

NUMBER OF PRODUCTS  
COMPLETED - 2

NUMBER OF ONGOING  
PRODUCTS - 2

NUMBER OF PRODUCTS  
SOLD - 3

### CONTACT DETAILS

Mail\_ID: [veerakumars@bitsathy.ac.in](mailto:veerakumars@bitsathy.ac.in)

Ph. No. : +919865255732





## RETROFIT ELECTRIC BIKE

The electric vehicle is the only alternative way for the steep hike in fuel price: the conversion of Conventional IC Vehicle into an electric vehicle with customized speed and customized battery packs based on customer requirements. The configuration of this retrofit vehicle cost is almost half of the total cost of the e-vehicle available in the current market. The conversion of any two-wheeler like TVS xl, scooter, bike, etc., into an electric vehicle. The complete, once charging of the battery will give the total mileage of 90km which will be the cost per km, is just 14paise. Due to cheap cost and high durability, retrofit EVs are more popular.

## IR TIMER SANITISER DISPENSER

The enhanced version of the dispenser can be used for any liquids. The automatic dispenser is a product aimed at curbing the spread of Corona virus covid19. This is achieved by preventing the user from coming into contact with the hand-washer while washing hands. As it has been proven through research, the Corona virus spreads by coming into contact with infected surfaces. Indeed this project has stood out to curb the corona pandemic. The product uses an IR sensor to detect the presence of the user's hand to activate and dispense the liquid



## ACTION PLAN FOR THE UPCOMING MONTHS

To design and develop a low-cost kitchen cleaning system. Designing and identification of the components are in progress. Planned to complete within 20 days.

To develop a Segway vehicle. Identification of the chase type is in progress, and need to choose the perfect battery range for it. Planning to complete this process in the next two months.

# EMBETRONICS

*Your Techno Partner*



## OBJECTIVE OF THE FIRM

To provide World-class design services for complete end-to-end electronic product development from concept definition till production for numerous application areas such as Embedded System, IoT, Embedded Vision and AI.

### IN THIS ISSUE

NUMBER OF PRODUCTS  
COMPLETED - 1

NUMBER OF ONGOING  
PRODUCTS - 3

NUMBER OF PRODUCTS  
SOLD - 1

### CONTACT DETAILS

Mail\_ID: [rajasekarl@bitsathy.ac.in](mailto:rajasekarl@bitsathy.ac.in)

Ph. No. : +919600766788

## THERMOWIFIPRO V 2.0

THERMOWIFIPRO V 2.0 is designed to monitor and record the ambient temperature. Message alert option has additionally included along with automated alarming and continuous monitoring for humidity, temperature, and closure signals from water sensors you will have a reliable server room monitoring system that can trigger alarms in time to save vital equipment as well as the system will send an intimation message to the client.



## ACTION PLAN FOR THE UPCOMING MONTHS

To design and fabricate Smart Gate. It has the features of sensing of human body temperature, automatic sanitizer dispensing and face mask dispensing. It is planned to complete in 3 months.

Planning to design a depicted bell. Purchasing components are in progress and it will be completed in the next 90 days.



# FAB SOLUTIONS

*Quality REDefined*



## **FACULTY MEMBERS:**

Mr. P VIVEK KUMAR

Mr. K N KARTHICK

Mr. E SOUNDARPANDIAN

## **OBJECTIVE OF THE FIRM**

To become the best provider for technical accessories and product. To provide the highest quality & innovative product possible through our highly skilled and dedicated team members and state-of-the-art and patented products and manufacturing process

### IN THIS ISSUE

NUMBER OF PRODUCTS  
COMPLETED - 2

NUMBER OF ONGOING  
PRODUCTS - 2

### CONTACT DETAILS

Mail\_ID: vivekkumar@bitsathy.ac.in

Ph. No. : +919003159788

## PORTABLE SHUTTER LIFTER VERSION 2.0 (WITH PLANETARY GEAR)



A portable shutter lifter is a kind of lifter that is designed for lifting shutters, it can lift up to a maximum shutter weight of 250-300 kg. It was designed to fit with the shutter shaft, with the help of coupling we can connect the lifter to the shutter. The lifter was driven by the 100 RPM high torque planetary geared DC Motor, the power required for the motor is given by the 12 V 10 AMP SMPS, with the help of a DPDT switch we can change the upward and downward. It is really helpful for the users having more than one shutter. These lifters are easy to use and manage.

## LPG GAS CYLINDER TROLLEY 2.0 WITH CYLINDER WEIGHT MONITORING SYSTEM

LPG gas cylinder trolley is a heavy-duty full metal trolley with wheels and handle. Its innovative design helps everyone to move and manage their 19 kg commercial LPG cylinder and 14.2 kg domestic cylinder easily without touching or lifting it. Just fix the hooks of the trolley to the rim of the cylinder and tilt the trolley to move the cylinder effortlessly. Lightweight Design enables Easy Handling. Wheels are very heavy so that they can even be used on roads. Any luggage such as your grocery/vegetable bags etc up to 50 kgs can easily be lifted. No Rust Mark and Scratches on your floor. No assembly required



## ACTION PLAN FOR THE UPCOMING MONTHS

To design and fabricate Drum Lifter for the Food Industry. In order to lift and transport heavy drums in Food industries or hostels, it is always recommended to use a drum/barrel lifter. The product is planned to launch in the next 4 months.

It is planned to fabricate a Bio-Oxy Meter from our Manufacturing and fabrication Laboratory. With this prototype we can perform biometric attendance registration as well as oxygen level monitoring.

# FIRST CHOICE AC SOLUTIONS

*Service at your Doorstep*



**FACULTY MEMBERS:**  
 Dr. M RAVIKUMAR  
 Mr. K B PRAKASH  
 Mr. M CHANDRASEKARAN

## OBJECTIVE OF THE FIRM

- To develop a diverse set of design and real time problem solutions in our domain and extend to address the social problems.
- To provide high quality service and maintenance support with low cost in the area of renewable energy and HVAC.
- To generate revenue by doing consultancy work for industries/ commercial sectors.

### IN THIS ISSUE

NUMBER OF PRODUCTS  
 COMPLETED - 2

NUMBER OF ONGOING  
 PRODUCTS - 2

### CONTACT DETAILS

Mail\_ID: ravikumarm@bitsathy.ac.in  
 Ph. No. : +919786079032



## SOLAR COOKER



Box-type solar cookers are made up of an insulated box, metallic cooking pots inside the box, a double glass lid on the cooking tray, and a reflecting mirror installed on the underside of the box's lid. The sides and bottom of the cooking tray are insulated. The incoming solar radiation strikes the blackened cooking pots and the cooking tray through the double glass lid. To facilitate cooking, heat is absorbed by the blackened surface and transferred to the food inside the pots. The mirror reflector is positioned in such a way that the solar radiation falling on it is reflected in the cooker box. Inside the box, up to four black-painted vessels are placed. The box-type solar cooker takes  $1\frac{1}{2}$  to 2 hours to cook vegetables, rice, dals, cake, etc.

## INCUBATOR FOR EGG HATCHING

An incubator is a device that stimulates avian incubation by keeping eggs warm at a specific temperature range and at the proper humidity level while turning them to hatch. Breeding/hatching machines or hatchers, setters, and egg breeding equipment are some of the various names for the incubator.

The incubator is a device that regulates environmental parameters such as temperature, humidity, and rotating to ensure that viable eggs are placed in an enclosure hatch successfully. It's frequently employed for things like growing bacterial cultures, hatching eggs artificially, and setting up the right circumstances for a chemical or biological reaction. The incubator has been seen hatching bird and reptile eggs. It allows the fetus inside the egg to develop without the need for the mother to give warmth. Chicken eggs have been known to hatch after roughly 21 days, but other bird species may take longer or shorter. Birds are also raised in incubators. An incubator should be able to create the ideal habitat and conditions for an egg to incubate. It regulates factors like temperature, humidity, and flipping the eggs as needed, ensuring that the egg is correctly incubated because it mimics the natural state of the hen.



In addition, the incubator permits the egg to incubate while removing external hazards that could destroy the eggs.

The purpose of modern hatchery management is to produce a large number of uniform, healthy day-old chicks. Robustness is a health characteristic that begins in the embryonic life stage of the chicken and correlates directly with individual chick performance and resistance under various farm settings. Within the same incubator, different species of birds can be incubated at the same time

## ACTION PLAN FOR THE UPCOMING MONTHS

To fabricate Incubators for chicken poultry. Our offered machine can hatch 100- 300 eggs at a time and takes 21 days to process. It requires designing and modelling and needs to purchase the suitable components for the fabrication process. Planning to complete the product in the next two months.

To fabricate Table top refrigeration and air-conditioning system for office purposes. Planned to produce more cooling by consuming less power. Designing and modelling of the Table top VCR system is to be done and the product will be completed in the next six months.

# i Foods

பகிர்ந்துண்டு பலலுயிர் ஓம்புக



## FACULTY MEMBERS:

Dr. R BALAKRISHNA RAJA  
Mr. L GOWRISHANKAR  
Mr. G GOWTHAM RAJ

## OBJECTIVE OF THE FIRM

- To plan to develop healthy food with fortified nutraceuticals
- To enhance the quality of functional foods using the concept of waste to wealth
- To create the customer base through the WA & other social sites. (if possible will develop app based order & bill maintenance)

### IN THIS ISSUE

NUMBER OF PRODUCTS  
COMPLETED - 2

NUMBER OF ONGOING  
PRODUCTS - 2

NUMBER OF PRODUCTS  
SOLD - 2

### CONTACT DETAILS

Mail\_ID: balakrishnarajar@bitsathy.ac.in  
Ph. No. : +919488570421



## MINERAL COOKIES

Mineral cookies are made especially for diabetic patients with very less sugar and sugar alternatives. Instead of adding salt for taste, we are adding mineral enriched salt to enhance the nutritional properties of food.

**Functional Food & Nutraceutical Lab**

**Nutritive Biscuits**

CELEBRATING 25<sup>th</sup> ANNIVERSARY 1996-2021

- ✓ Less Fat
- ✓ Zero preservatives & artificial Flavours
- ✓ Source of Dietary Fibre

Relax and Nourish with comfortable bite

NUTRITIONAL FACTS *		
For serving size of 1 Biscuit (18g)		
		% Daily value
Calories	65	
Total Fat	0.4g	-
Saturated Fat	0.1g	-
Sodium	48mg	3%
Carbohydrate	12.3g	-
Net Carbs	10.5g	-
Fibre	1.8g	8%
Glucose	0.8g	-
Protein	2.1g	-

\* Approx values

Designed by Gewtham Raj G 8T10754

Healthy Choice

BANNARI AMMAN



## FLAVORED MILK

We all know that milk is the primary source of calcium and a highly consumed food product. To increase the consumption rate among children and adolescents, we attempt to provide milk in different flavors without affecting its natural properties.



## BANANA MUFFINS

Banana muffins are made with thick sweet batter that is full of mashed bananas, ground cinnamon, and toasted nuts. As long as you avoid high-calorie mega-sized muffins, banana nut muffins make a healthy breakfast. One banana nut muffin is a good source of vitamin E and iron, but it's an even better source of omega-3 fatty acids, B vitamins and essential minerals. Cinnamon helps in eliciting the anti-inflammatory immunity.

## SPONGE CAKES

Sponge cake is delicate and spongy with a uniform crumb that is made with eggs, sugar, and flour. Simple carbs (refined foods) will push up your blood sugar levels and shut down the fat burning process making you put on weight. Usage of eggs will provide good proteins. The cake is primarily made of plain flour and lots of sugar which are simple carbs.



## ACTION PLAN FOR THE UPCOMING MONTHS

To design edible cups with increased stability for mechanical stress and moisture. Product optimization by varying ingredients and ingredient percentages and also planning on creating a DIE for occupying oven area efficiently and to decrease production time. Planning to complete it within 90 days

To design optimum packaging materials for Stress release Bar for commercialization.

# IOT TECHNO SOLUTIONS

*Automate Everything*



## FACULTY MEMBERS:

Mr. S TAMILSELVAN  
Mrs. P RAMYA  
Ms. V R KIRUTHIKA  
Mr. R RAMESH

## OBJECTIVE OF THE FIRM

IoT Techno Solutions is a internet of things (IOT) development solutions provider that delivers the most innovative and agile solutions that enable you to automate, inspire and impress. We dedicate hours of painstaking analysis to develop solutions that not only cater to our customers' current requirements but also scale seamlessly for future needs. Most importantly, we always aim to build solutions that Focus on design and development of IoT enabled technologies & solutions which are cost effective and socially relevant on increasing your productivity.

### IN THIS ISSUE

NUMBER OF PRODUCTS  
COMPLETED - 1

NUMBER OF ONGOING  
PRODUCTS - 1

### CONTACT DETAILS

Mail\_ID: [tamilselvans@bitsathy.ac.in](mailto:tamilselvans@bitsathy.ac.in)  
Ph. No. : +918012443399



## HOME AUTOMATION SYSTEM

The purpose of Home Automation is to monitor and control signals from different appliances, or basic services. A smartphone or web browser can be used to control or monitor the home automation system. "Home automation" refers to the automatic and electronic control of household features, activities, and appliances. In simple terms, it means you can easily control the utilities and features of your home via the Internet to make life more convenient and secure and even spend less on household bills. IoT based Electrical device controlling the system was implemented in the IoT Lab. In an extension of this work, the Android app was specially designed to control the lab appliances.



## ACTION PLAN FOR THE UPCOMING MONTHS

To design an Automated LED DISPLAY BOARD using IoT technology. The difficulties of the older version of LED Display Boards are identified, the product will be completed in six months.

To design RFID BASED ATTENDANCE SYSTEM, in which the attendance of students or employees will directly be recorded by swiping the card. The sensors and controllers have to be identified, the product will be completed in 4 months.

# i-PRINT

*Print Anything*



## OBJECTIVE OF THE FIRM

- To design and fabricate low cost CNC based machines to match the need of the customer.
- To develop next-generation machines that would otherwise be impossible/impractical to manufacture, including the creation and incubation of new applications for additive manufacturing and attendant first-to-market advantages.

### IN THIS ISSUE

NUMBER OF PRODUCTS  
COMPLETED - 2

NUMBER OF ONGOING  
PRODUCTS - 3

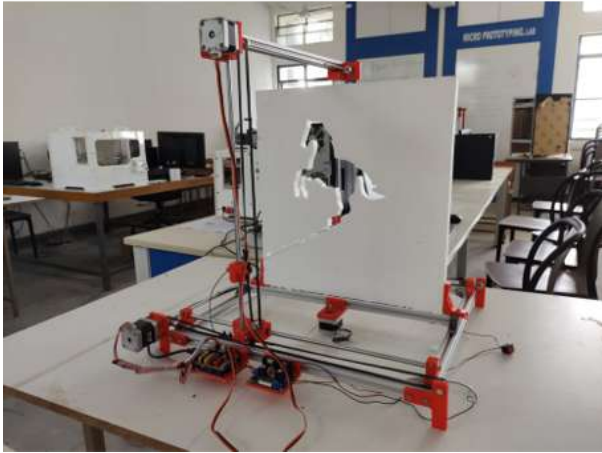
NUMBER OF PRODUCTS  
SOLD - 1

### CONTACT DETAILS

Mail\_ID: dhineshsk@bitsathy.ac.in

Ph. No. : +919715367724

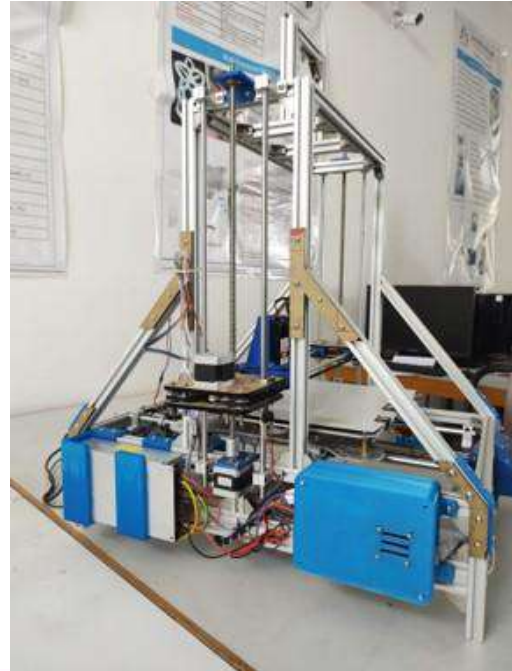
## 2 AXIS FOAM CUTTING MACHINE



Instead of bits or lasers, the main tool of this machine is a hot wire or a special type of resistance wire which gets really hot when current flows through it. The hot wire melts or evaporates the foam when passing through it, so we can precisely and easily get any shape we want. The base construction is made out of 20x20mm T-slot aluminum profiles. These profiles are chosen because they are easy to use, we don't have to drill any holes or something when assembling, plus they are reusable, we can easily disassemble and use them for other projects. The motion of each axis is achieved by using linear bearings sliding on 10mm smooth rods.

## MULTI-FUNCTIONAL CNC MACHINE

The multi-functional modular machine can be used for new product development as well as to support the day-to-day needs in 3D printing, laser cutting, and engraving. This setup is capable of doing 3-axis simultaneous interpolated operation and will be useful for the small-scale industries to encourage their business motives. This CNC machine design with a workspace of 200 x 200 x 120 mm uses a precision stepper motor that is combined with Belt and lead screws in moving the axis smoothly on linear bearings that increase the accuracy of the products



## ACTION PLAN FOR THE UPCOMING MONTHS

To develop a 3D printer that is capable of printing a variety of irregular shaped clay products. Planned to use materials like cement, clay and plaster of Paris to print different utilities. It requires 180 days to complete.

To develop a Clay 3D printer, that is capable of engraving custom designs on the wood structures that can be used for fabricating furniture.. Planned to complete the product in eight months.



# SKY VIEW

*Fly above and Beyond*

**FACULTY MEMBERS:**

Mr. V HARIPRASAD

Mr. A SUNDARAMAHALINGAM

Mr. R NAVEEN

## OBJECTIVE OF THE FIRM

Sky View aims at developing quality drone parts and provide expert drone services. Sky View design and develop drone parts and assemble them to meet customer requirements. We are capable of building drone for applications like Agricultural Drones, Pesticide Spraying Drones, Crop Monitoring Drones, Surveillance Drones, Drones Camera, and Photography Drones. As a service provider the company offers solutions in Drone Manufacturing, Aerial Photography, Surveillance Drone, and Digital Photography services to the customers. We also aims in providing intelligent solutions to industry by promoting the usage of drone

### IN THIS ISSUE

NUMBER OF PRODUCTS  
COMPLETED - 1

NUMBER OF ONGOING  
PRODUCTS - 1

### CONTACT DETAILS

Mail\_ID: hariprasadv@bitsathy.ac.in

Ph. No. : +917708379759

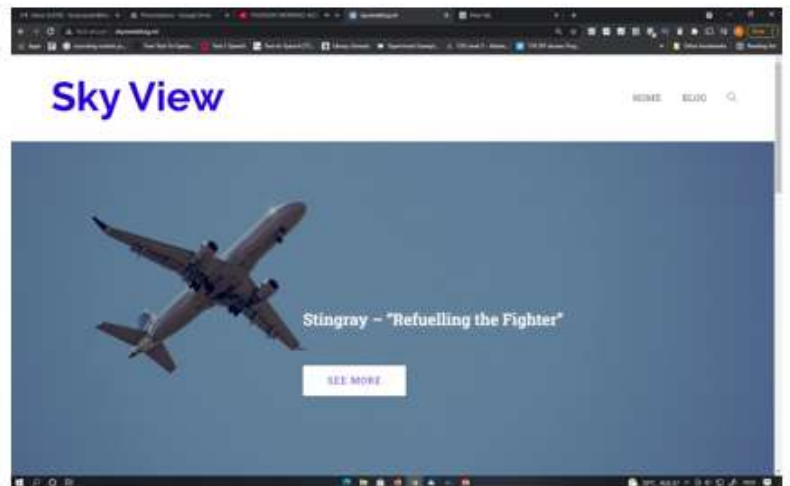


## FPV DRONE FRAME

Skyview has developed drone frame using carbon and basalt fibers. The composite material is prepared as plate using hand layup method and laser cutting is used bring the shape. The testing of the frame is in progress to access the integrity and strength of the frame during actual working environment.

## ONLINE PLATFORM FOR SKYVIEW

Created online educational platform to equip the students with drone components' fabrication, its assembly and programming. Students may choose the desired training they need through the Skyview website and they will be trained accordingly. In this regard a website for our firm is being developed and the trail run is in progress. <http://skyviewblog.ml/>



## ACTION PLAN FOR THE UPCOMING MONTHS

To design a Fixed Wing UAV and pre-printed chloroplast sheets will be provided to customers. Preparing various Fixed Wing UAV designs and planned to complete in 3 months.

To design racing drone frames using light weight composite sheets. It needs designing and fabrication of composite sheets, so the product will be completed in the next six months.

# SMILO BIO

SMIOBIO CARE FOR YOU

## FACULTY MEMBERS:

Dr. R RAVIKUMAR

Dr. M KIRUPA SANKAR

Mr. A VIMAL ARASAN



## OBJECTIVE OF THE FIRM

- To deliver a healthy and quality product. To reveal the traditional food as per today needs and acceptance.
- To serve the society with simplicity.

### IN THIS ISSUE

NUMBER OF PRODUCTS  
COMPLETED - 1

NUMBER OF ONGOING  
PRODUCTS - 1

NUMBER OF PRODUCTS  
SOLD - 1

### CONTACT DETAILS

Mail\_ID: ravikumarr@bitsathy.ac.in

Ph. No. : +919942247257



## ALGAL PHYCOBILIPROTEIN

PC45-phycobiliproteins, a group of light harvesting apoproteins linked to open-chain tetrapyrroles as prosthetic group. Light harvesting, pigment binding protein isolated from algae. PC is a potent tumor chemopreventive. The pure c-phycoyanin and polysaccharides isolated from *S. platensis* induce proliferation and differentiation of committed hematopoietic progenitor cell and can be reduce the probability of anemia in mice and also amplify immunity by activation of macrophage functions, production of IL-I, phagocytic process.. The dried and ground material contains 60% protein, 24% carbohydrate, 8% fat, and some vitamins and minerals . Food applications of PC 45 include candies, ice cream, and other dairy products.



## ACTION PLAN FOR THE UPCOMING MONTHS

To develop Bromelain ENZYME impregnated cookies. Bromelain ENZYME requires extraction and purification, so it takes 60 days to be completed.

To prepare ornamental fish food in Low cost. It requires various grain husk collection, pulverizing, gel entrapping and blinding with spirulina. The product will be completed in the next 60 days.

# TECHNOLOGY-FOR-WILDLIFE INDIA LTD.

*Technology for Wildlife*



## FACULTY MEMBERS:

Dr. SANJOYDEB

Dr. R SARAVANA KUMAR

Mr. R RAMKUMAR

## OBJECTIVE OF THE FIRM

To design and development various wildlife and nature conservation technologies through in-depth R&D. Research outreach to forest department, farmers and NGOs through consultancy

### IN THIS ISSUE

NUMBER OF PRODUCTS  
COMPLETED - 2

NUMBER OF ONGOING  
PRODUCTS - 1

NUMBER OF PRODUCTS  
SOLD - 2

### CONTACT DETAILS

Mail\_ID: saravanakumar@bitsathy.ac.in

Ph. No. : +916381311652

## OPTICAL FENCING SYSTEM

A fully automated LASER fence with transmitter and receiver separation 200m+. Elephant movement is tracked down when it crosses the fence. The fence doesn't create any obstruction to elephant movement, only detects its movement



## RF OPERATED ACOUSTIC DEVICE



The RF Operated Acoustic Device has an inbuilt torch light with 110dB high volume Hooter with dabble switch. It has 12V 2.5 Ah battery backup which provides sound for 100 times when button pressed for 5 seconds time interval, a metal handle for easy lifting and a Wireless receiver operated by RF switch.

## ACTION PLAN FOR THE UPCOMING MONTHS

To design a High frequency Acoustic Device to repel animals in protected areas of forest. Planning to Test in forest boundaries / Implementing in farm lands near to forest boundary. It requires 30 days of time to complete

To design Personal Safety Spark generation System and planned to Interact with DFO Sathyamangalam to get the needed technology support to forest officials and local peoples near protected areas. It requires 60 days of time to complete.



# TRACE ROBOTICS

*Build The Future*



**FACULTY INCHARGE:**  
Dr. P SENTHILKUMAR  
Mr. R VELNATH

## OBJECTIVE OF THE FIRM

- Trace Robotics is a Mobile Robotics technology firm that designs, manufactures and deploys robotics systems for Industry and educational sector.
- We combine expertise in robot hardware and robot software engineering to solve operational issues in automation.

### IN THIS ISSUE

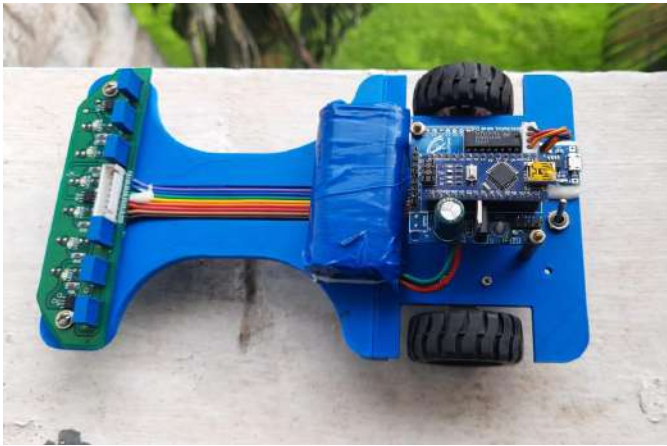
NUMBER OF PRODUCTS  
COMPLETED - 1

NUMBER OF ONGOING  
PRODUCTS - 1

NUMBER OF PRODUCTS  
SOLD - 1

### CONTACT DETAILS

Mail\_ID: [senthilkumarp@bitsathy.ac.in](mailto:senthilkumarp@bitsathy.ac.in)  
Ph. No. : +917373562428

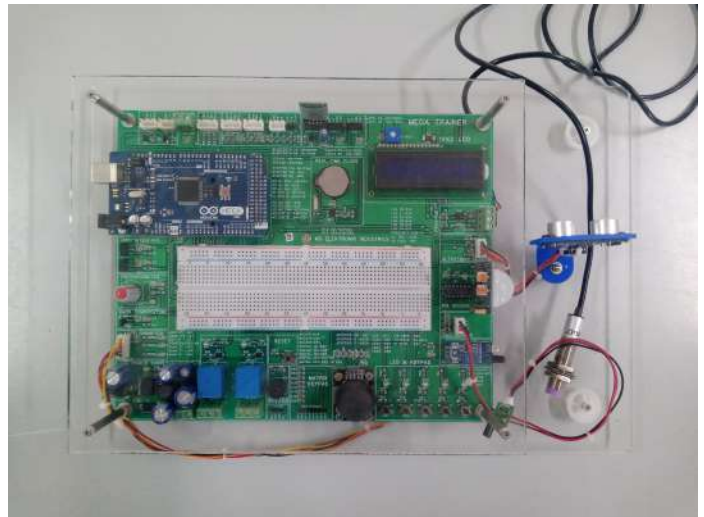


## RANGER MOBILE ROBOT KIT

Mobile robot beginners kit will be used to learn basic programming in mobile robot-like line following robots, maze solving robot. Interfacing sensors and motors for a mobile robot can be learned quickly from this kit

## ARDUINO TRAINER KIT

This trainer kit will be useful for learners to program Arduino with sensors and actuators. Display, input device, sensor, and actuators are integrated into this kit for quick learning of the embedded systems



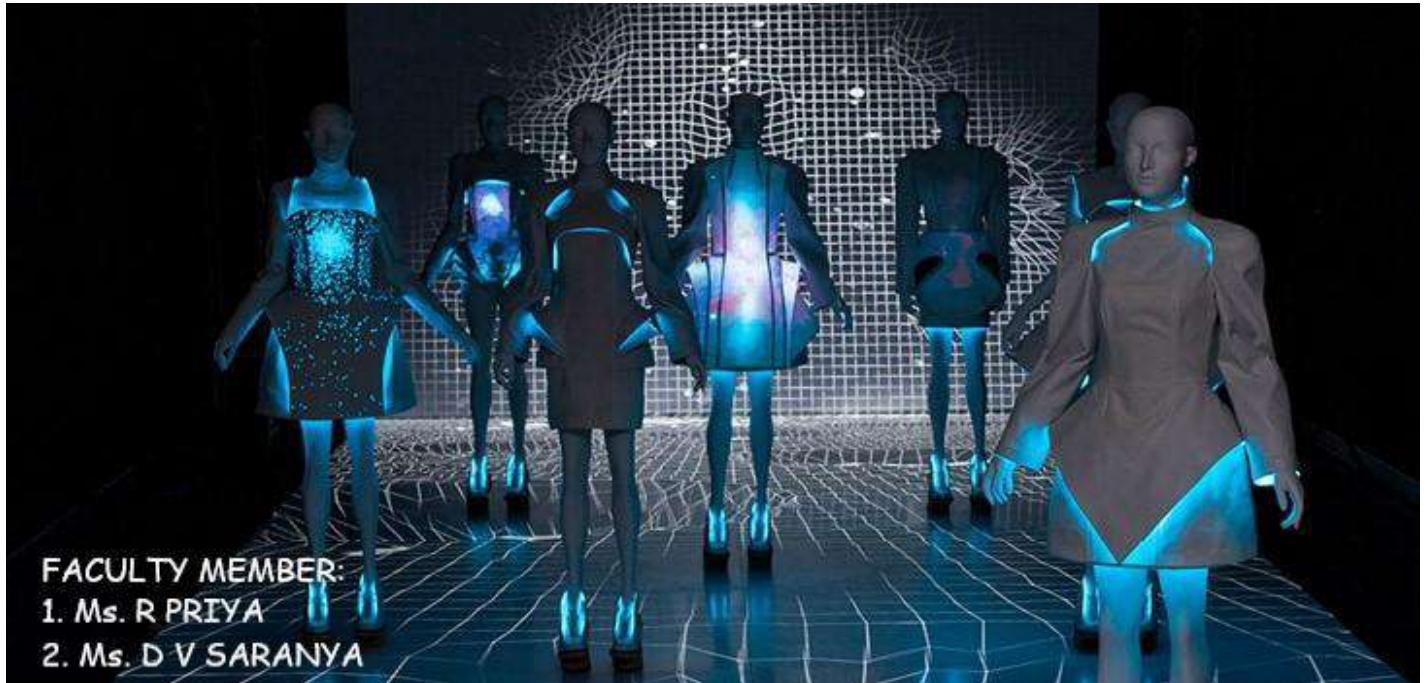
## ACTION PLAN FOR THE UPCOMING MONTHS

To develop a mobile robot beginner kit with an integrated turn key system which helps beginners to learn about robotics concepts.

To develop an Autonomous mobile robot for industry environment which carries objects from one place to another in a production plant. It is planned to launch in 8 months.

# HEART2ART

*Giving heart to art*



FACULTY MEMBER:  
1. Ms. R PRIYA  
2. Ms. D V SARANYA

## OBJECTIVE OF THE FIRM

- To develop meticulously handcrafted products with a sustainable approach. To cater to the customized design needs of users.
- To develop digital designs - digital art, package designs, logos and graphics.

### IN THIS ISSUE

NUMBER OF PRODUCTS  
COMPLETED - 2

NUMBER OF ONGOING  
PRODUCTS - 3

NUMBER OF PRODUCTS  
SOLD - 1

### CONTACT DETAILS

Mail\_ID: priyar@bitsathy.ac.in  
Ph. No.: +919524956773





## FEATHER EARRING

Being fashionable is not just a statement; it is a 'Style Statement'. Each individual will have his / her own style which is a representation of their AIO's (Attitude, Interest and Opinion). It's all about presenting oneself through a visual language. Nowadays there a variety of aspects through which one can portray oneself fashionable.

Few do it by being up-to-date in terms of technology, few do it by wearing outfits that are extraordinary and few also do it by showcasing an extraordinary talent. Feather earrings are one such little thing that adds beauty to a female when worn with suitable outfit. Feather earrings are fun, feminine and trendy that is available in different colors. These long earrings are great to pair with jeans and other casual wear if people are unaware about the 'how to wear?' aspect.

## WALL HANGING

As the average income of a family increases, the lifestyle of the family also takes a change. When we say lifestyle change, it has its reflection in personal grooming, way of living, home styling and in all that is considered a part of the family. Wall hanging is considered to be one of the lifestyle products that are used in houses to beautify the living space. It adds to the aesthetics values of the family. Gone are the days, where normal paintings or photographs are used for decorating the walls. Many new techniques and methods are in practice these days and it provides a complete new look to the work on the whole.



## ACTION PLAN FOR THE UPCOMING MONTHS

\* To develop theme based occasional products suitable to special festivals and events.

\* To develop diy kits suitable to specific traditional/ creative craft techniques.