

# RESEARCH AND DEVELOPMENT POLICY 2023-24



## **BANNARI AMMAN INSTITUTE OF TECHNOLOGY**

(Autonomous Institution Affiliated to Anna University Chennai  
Approved by AICTE-Accredited by NAAC with 'A+' Grade)

**SATHYAMANGALAM - 638 401, ERODE DISTRICT, TAMIL NADU**



**IQAC - Research and Development**  
**BIT CFR - Centre for Research**

# Contents

S. No.	Description	Page No.
1.	Vision, Mission and Objectives	3
2.	Research Forum	3
3.	Responsibilities of BIT CFR	4
4.	Funding Proposals	4
5.	Research Publications	6
6.	Entitlements	6
7.	Research Promotion	6
8.	Research Facilities	9
9.	Newsletter	9
10.	Intellectual Property Rights (IPR)	9
11.	Research Ethics	9

## **1. Vision, Mission and Objectives**

### **1.1 Vision**

The Centre for Research at Bannari Amman Institute of Technology (BIT CFR) will serve as a globally renowned centre for research in Science, Engineering and Technology.

### **1.2 Mission**

- To indulge in extensive core and multidisciplinary research activities
- To develop a core group of faculty members with high potential in research
- To create research facilities in the thrust areas of science, engineering and technology

### **1.3 Objectives**

- To create a research ambience and infrastructure.
- To facilitate interdisciplinary collaboration by bringing together researchers from various academic disciplines to work on complex problems and innovative solutions.
- To disseminate research findings through publications, conferences, seminars and other knowledge-sharing platforms.
- To seek external funding through grants and contracts and partnerships to support research projects and activities.
- To provide research training to the faculty members and students to enhance their research potential.
- To engage with the local community, industry partners and other stakeholders to address real-world challenges and promote knowledge transfer.

## **2. Research Forum**

The planning, implementation and control of the BIT CFR is governed by the research forum. It consists of a Research Advisory Board (RAB) and a Research Council.

### **2.1 Research Advisory Board (RAB)**

The RAB's primary objective is to formulate strategic initiatives that bring the Research Council's plans to fruition. The role of the RAB is to guide and oversee the research activities of the academic institution.

The Research Advisory Board consists of the Principal as RAB Chairman, external mentors representing government scientific organizations and academic research experts, internal

research experts, Head R & D and special invitees. The Principal appoints the external mentors for tenure of one year. The members of the RAB convene annually.

## **2.2 Research Council**

The main objective of the Research Council is to promote a dynamic and thriving research culture within the institute. The Research Council is established at the institutional level and it comprises the Research Experts within the institute, Head – R & D and special invitees. Research experts are appointed by the Principal for tenure of one year.

The Research Council convenes biannually to review the research plans of each department individually. Furthermore, it endeavours to establish supplementary research facilities, fostering multidisciplinary research among departments and thereby enhancing the overall research landscape of the institution.

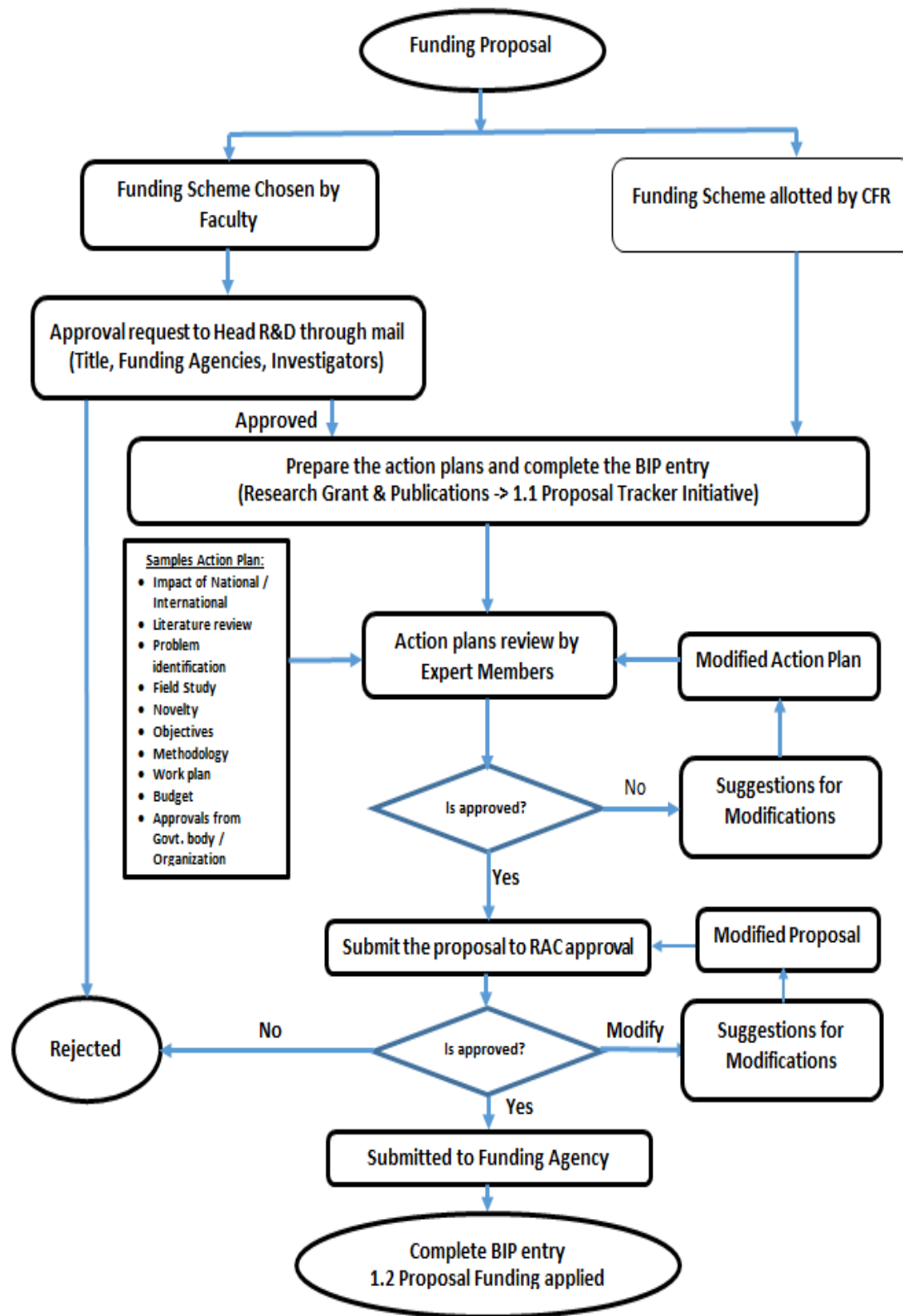
## **3. Responsibilities of BIT CFR**

The BIT CFR holds the mandate to oversee research endeavours conducted by faculty members, scholars and students within the institution. It encompasses the following:

- Define research policies and implement them for the faculty members for funded research projects and consultancy from time to time as per directives and recommendations of the Research Forum.
- Promote Industry Institute Interactions (III) for collaborations in terms of research projects, faculty training, guest lectures, etc.
- Research budget – proposal and Implementation on approval.
- Distributing seed money for research projects.
- Planning of research infrastructure and optimum utilization.
- Inculcate research culture in the institute by organizing seminars, workshops, conferences, etc.
- Identification of research thrust areas where faculty members need training and implementation.

## **4. Funding Proposals**

BIT CFR encourages the faculty members to apply for funding support from the Govt. and Non-Govt. agencies, to do sponsored/collaborative research based on the call for proposals from the agencies. The process of funding proposal submission is shown in Figure 1. RAC indicates the Research Approval Committee.



**Fig. 1. Process of Funding Proposal Submission**

The PI shall attend the progress review meeting conducted by the review committee that comprises the Head of R&D and expert members. The PI shall submit the progress report to the concerned funding agency. The PI shall submit the project completion report, utilization certificate and publications/patent list to the sponsoring agency through the Head of R&D and the Principal.

## **5. Research Publications**

BIT CFR places strong emphasis on fostering a culture of publication among its faculty and researchers, urging them to showcase their research findings in nationally and internationally renowned peer-reviewed journals. These journals are meticulously indexed in prestigious databases like Scopus, Web of Science (WoS), Science Citation Index (SCI), SCI Expanded (SCIE) and UGC Care. The non-peer-reviewed journals will not be taken into account.

All the research articles crafted by faculty members, research scholars and students must undergo pre-peer review and plagiarism checks before submission and the choice of journal must align with the subject matter of the research.

BIT CFR will support publishing research articles through its peer-reviewed journal, “Indian Journal of Engineering, Science and Technology (IJEST)”. Furthermore, a crucial requirement stipulates that all faculty members attribute their research articles to Bannari Amman Institute of Technology as their official affiliation, ensuring due credit and recognition.

## **6. Entitlements**

BIT CFR provides financial benefits for the faculty members to motivate them to participate in funding/consultancy.

- For funded R & D projects, 2.5% of the project value is offered as an incentive for the project team after receiving the funds from the sponsored agency.
- For consultancy work, the consultancy policy of the institution will be followed.

## **7. Research Promotion**

BIT CFR shall promote the R&D activities by establishing research centres, motivating the faculty members to pursue research, providing seed money for research, QIP centres and recognizing the research star of the month.

### **7.1 Research Centre at BIT CFR**

BIT CFR facilitates the application for research centre recognition of all the eligible departments through the Centre for Research, Anna University, Chennai.

## **7.2 Research Supervision**

The institute encourages the faculty members to obtain research guideship from the affiliated university. The registered supervisors are expected to give preference for the internal candidates and full-time research scholars for guiding Ph.D.

## **7.3 Pursuing Ph.D.**

All the faculty members should register for their Ph.D. degree within two years of joining the institution. In supervisor selection, the preference should be for the research supervisor in the institute.

## **7.4 Review and research audits**

Review for Ph.D. Scholar will be conducted on a need basis, whereas review for the funded projects will be conducted once a semester. Furthermore, the guidelines will be shared for future courses of action. The Head of R&D and senior professors are the review committee members.

## **7.5 BIT CFR Seed Money for Faculty members**

BIT CFR sponsors and promotes research activities amongst its faculty members through the Research Fund Scheme (RFS). The RFS strengthens research and innovation in areas that address the challenges faced by industries, society, and key domains in science and technology.

The submission of project proposals for this scheme is scheduled annually, specifically in the month of June. The evaluation committee led by the Head of Research and Development (R&D) will evaluate all the proposals received. The approval committee includes the Head of the Institution and Management Representatives. The approval process of BIT CFR seed money is shown in Figure 2.

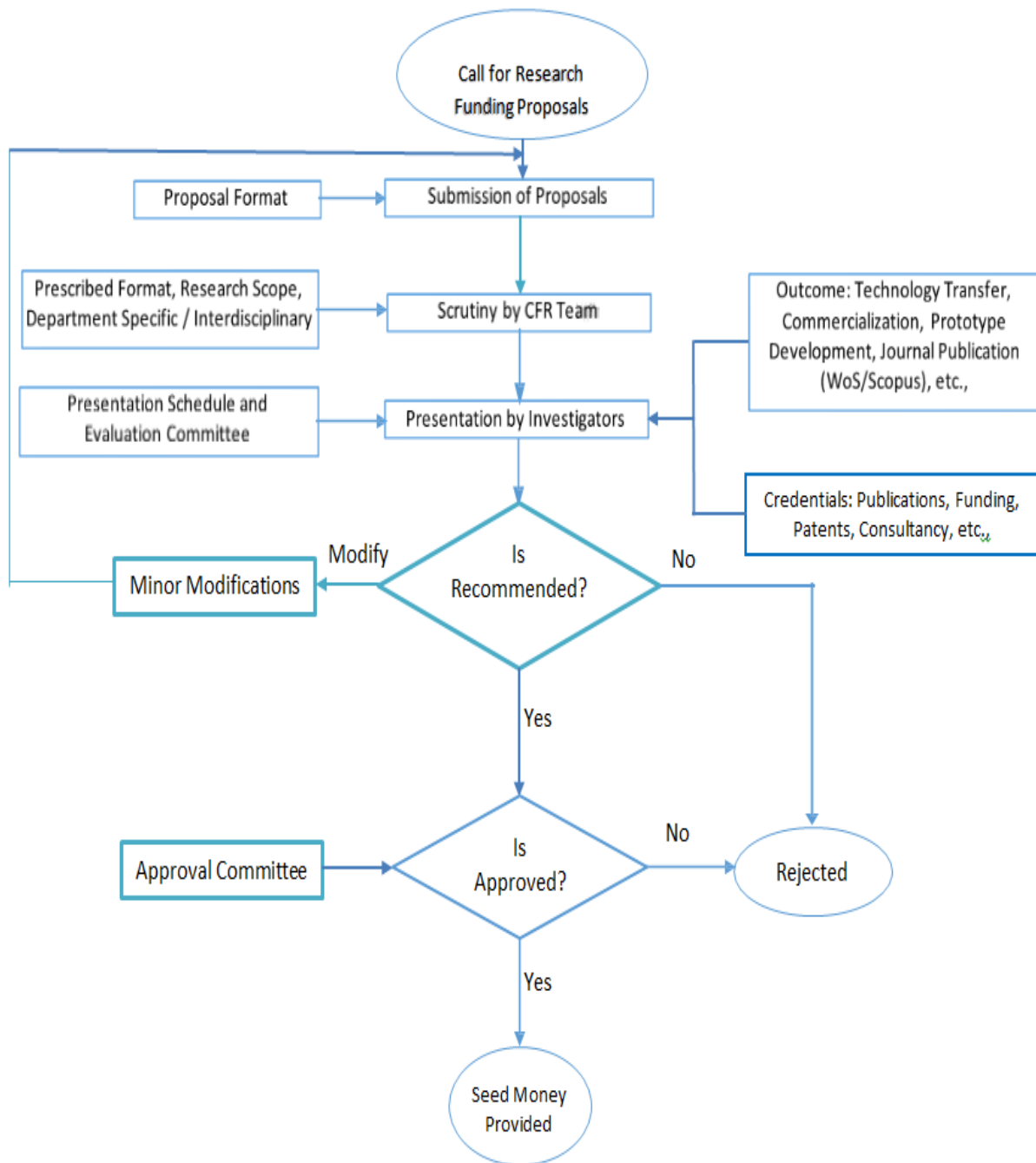
The investigators should acknowledge the institution during their outcomes to provide the necessary facilities and support to complete their projects through RFS. If any patents are filed as an outcome of the RFS project, the intellectual property (IP) should be filed and published in the name of the BIT.

## **7.6 Quality Improvement Programme (QIP)**

BIT CFR is one of the minor QIP centres of AICTE. BIT CFR encourages the applicants to enroll in the Quality Improvement Programme (QIP) schemes sponsored by AICTE for Ph.D registration.

## 7.7 Research Training

BIT CFR will provide regular training sessions to equip faculty members and students to aid research facilities in adopting optimal research practices. Attendance at these sessions is encouraged and serves as a source of motivation.



**Fig. 2. Seed Money Approval Process**



### **7.8 Research Star of the Month**

BIT CFR will identify potential research faculty members and feature them as the Research Star of the Month in the BIT newsletters.

### **8. Research Facilities**

The institution is continuously updating the research activities through highly equipped research laboratories and advanced software tools exclusively for the faculty members and students to carry out enormous research activities.

The external and internal members shall avail of the research facilities after seeking approval from CFR. The research facilities can be utilized in accordance with the norms, and the charges for the facilities will be based on the institute's guidelines.

### **9. Newsletter**

BIT CFR releases the newsletter twice a year. The newsletter comprises recent achievements, funding proposals, patents, publications, consultancy activities, events organized, Ph.D. attained and central research facility.

### **10. Intellectual Property Rights (IPR)**

The institute has set up an Intellectual Property Rights (IPR) Cell to aid researchers and inventors in safeguarding their innovations and intellectual property.

### **11. Research Ethics**

BIT CFR established the guidelines that govern the conduct of research to ensure its integrity, honesty and adherence to moral and professional standards. All the researchers should adhere to the following key aspects of research activities:

- All individuals conducting research should incorporate appropriate consideration of ethical issues into the design and management of projects.
- Prevent and check plagiarism to ensure academic integrity, originality and innovation.
- All the members who contributed to the research work should be acknowledged.
- BIT CFR is equipped with plagiarism software to ensure academic integrity, originality and innovation of documents such as theses, dissertations, term papers, reports, publications or any other such documents at the time of submission.

- The institute shall publicize the research ethics by circulating the same among the research supervisors, research scholars and faculty members of the institution, as well as publishing it on the College Website to attract the attention of interested people.